

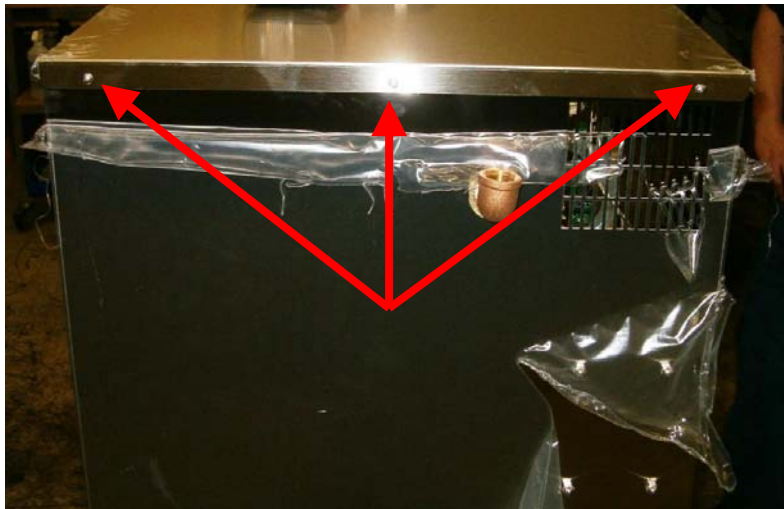
# Evolution Steamer Door Conversion

***1) Remove 3 screws on the Left and Right and Top panels.***

Left Panel



Right Panel

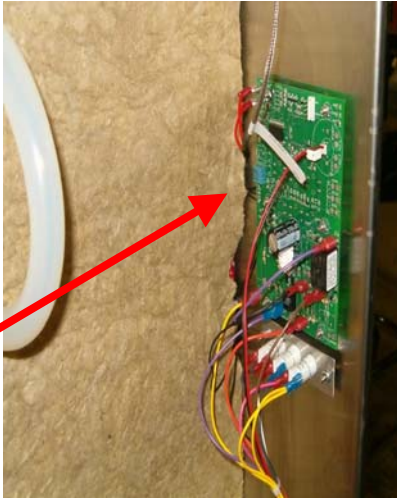


Back Panel

***2) Then remove the Left, Right, and Top panels.***

# Evolution Steamer Door Conversion

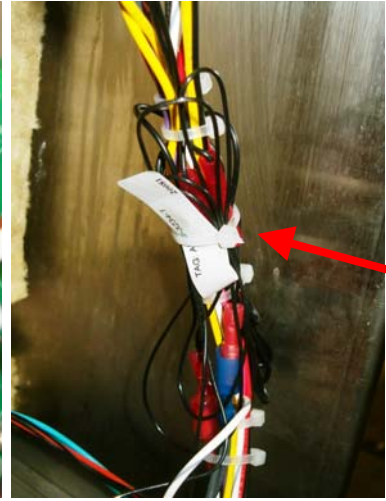
## 3) *Door switch relocation.*



A) Locate the door switch, on the left side of the steamer (when facing the steamer).



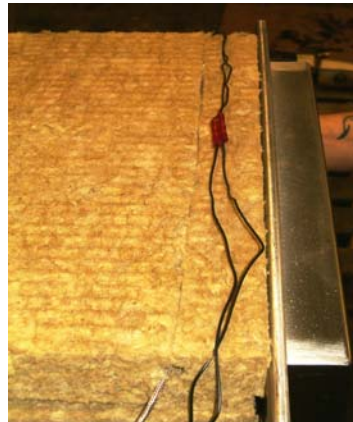
B) Remove two (2) #4 nuts and washers, using a 1/4" nut driver. You will reuse this hardware later.



C) Cut the wire tie. Be careful not to cut other wires.



D) Reuse the hardware and re-install door switch on the right side of the steamer.



E) Insert the door switch wiring into the same slit in the insulation as the temperature sensor wire.



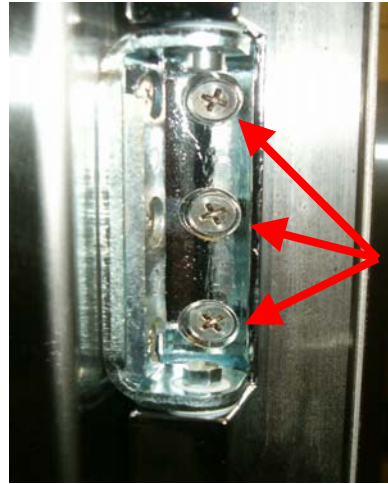
F) Reinstall the insulation.

# Evolution Steamer Door Conversion

## 4) *Door assembly removal.*

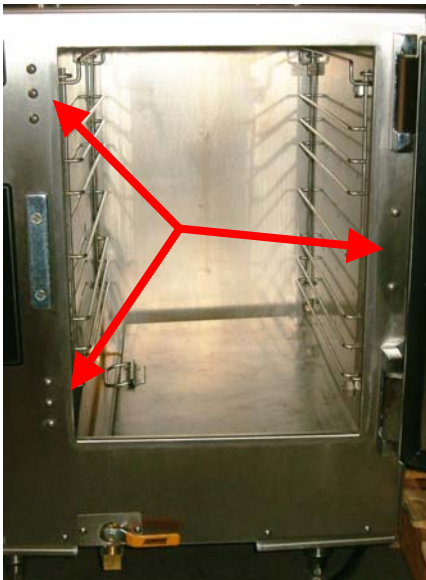


A) Remove the top and bottom hinge covers.



B) Remove 3 screws from the top and bottom hinges.

C) Set the door assembly and hinge spacers aside, as these will be reused later.



D) Remove eight (8) cover screws and set aside, as these will be reused later.



E) Remove the screws for strike plate and set aside, as these will be reused later.



# Evolution Steamer Door Conversion

## 5) *Door assembly re-installation.*

A) Use a medium grade of thread locker on all screws.



B) Install the strike plate in this orientation.



C) Insert a screw in the middle hole of the top and bottom hinge. With the counter sink side of the hinge spacer facing the steamer face. Install the remaining four (4) screws and assemble to the corresponding holes in the steamer in the new orientation. Use proper torque.



D) The instruction overlay needs to be relocated. Install a new instruction overlay on the right side of the door, approximately as shown by the original location. Spray the door with a mist of water at the new location. Use a firm plastic squeegee to smooth out bubbles and wrinkles.

# Evolution Steamer Door Conversion

## 6) *Final assembly.*

A) Re-install the Top, Right, and Left panels, re-using the original hardware.

