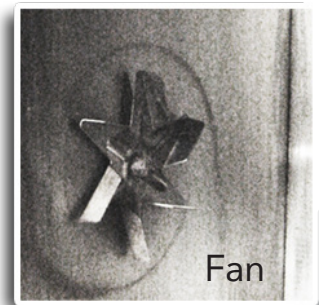
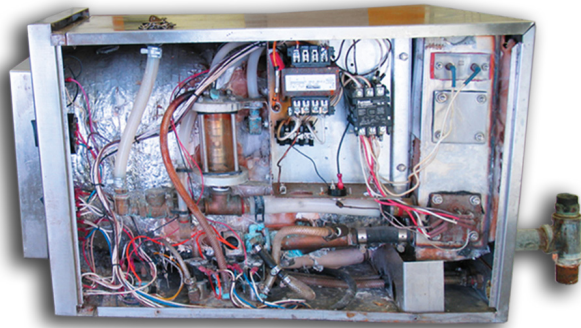


FEWER PARTS FEWER PROBLEMS

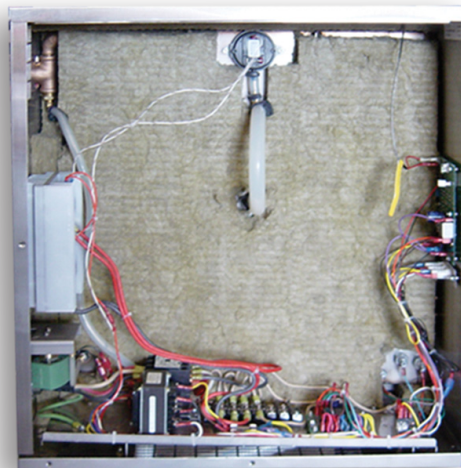
COMPETITORS' BOILERLESS STEAMERS

Competitors use moving parts to create convection.



ACCUTEMP'S EVOLUTION STEAMER

Available connected or connectionless
The Evolution uses Steam Vector technology with
no moving parts for convection cooking.



accutemp.net
(800) 210-5907

AccuTemp[®]
INNOVATIVE COOKING EQUIPMENT SOLUTIONS



**MADE IN
USA**

AccuTemp product may be covered by one or more US Patents. See www.accutempip.net

MM4391-1910