

TECHNICAL BULLETIN

BULLETIN #: SP8140	<p><u>NOTICE:</u>          THIS DOCUMENT CONTAINS INFORMATION PROPRIETARY TO ACCUTEMP PRODUCTS, INC. AND IS TO BE USED ONLY BY AUTHORIZED SERVICE PERSONNEL. DUPLICATION OR REPRODUCTION OF THIS DOCUMENT IN ANY OTHER FORM, IN WHOLE OR IN PART, IS STRICTLY PROHIBITED</p>
DATE:5/28/2020	
SUBJECT: Design change to gas orifice location	
MODELS:	
SERIAL NUMBER:	

**ONLY QUALIFIED SERVICE TECHNICIANS SHOULD PERFORM MAINTENANCE ON THIS EQUIPMENT.**

The location of the gas orifice on our Gas Evolution steamers has changed. This change can be applied to all Gas Evolutions regardless of age using the parts already included in the unit. Previously, the orifice was connected directly to the dual coil control valve (Fig.A). The new design relocated the orifice to have a direct connection with the cross pipe behind the ignition module (Fig.B).

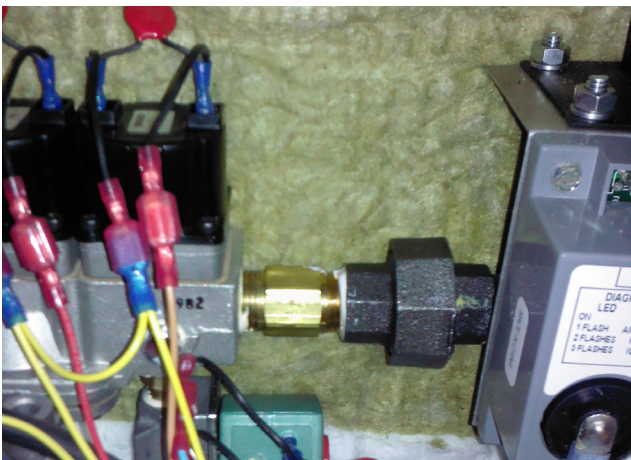


Fig.A



Fig.B

This revision can be completed with the parts available in the unit and should be done when if the gas valve is replaced or the orifice is removed for cleaning.